

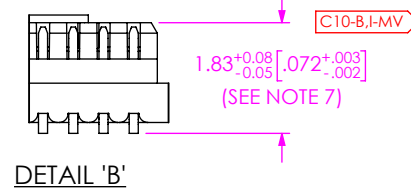
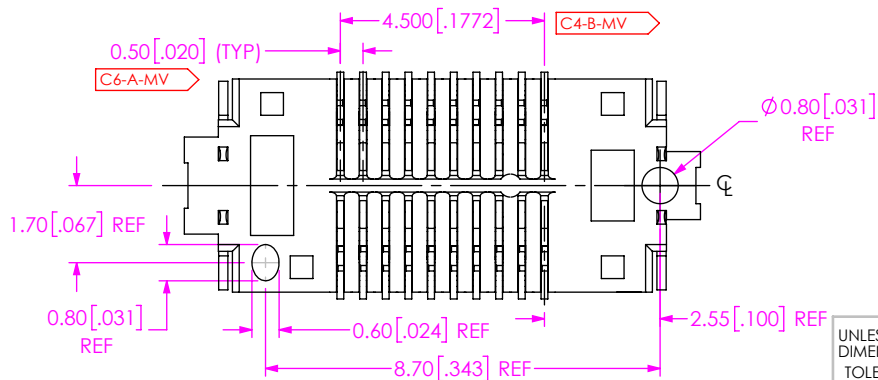
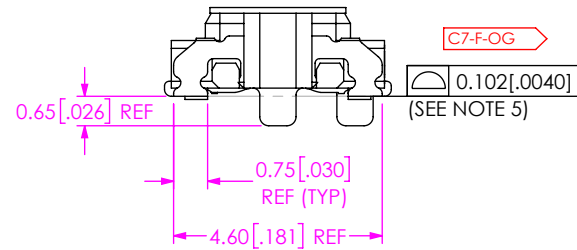
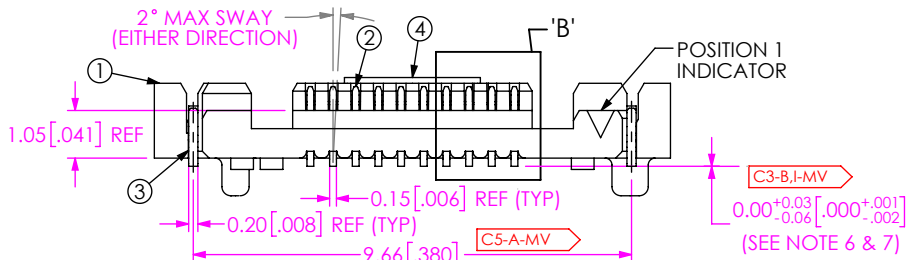
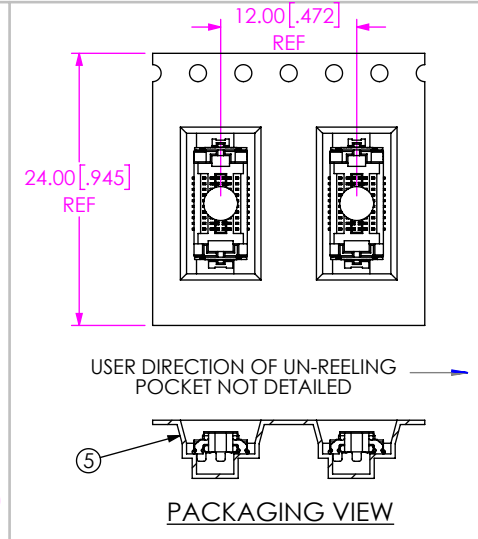
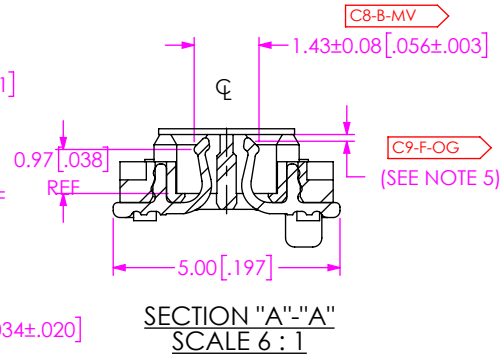
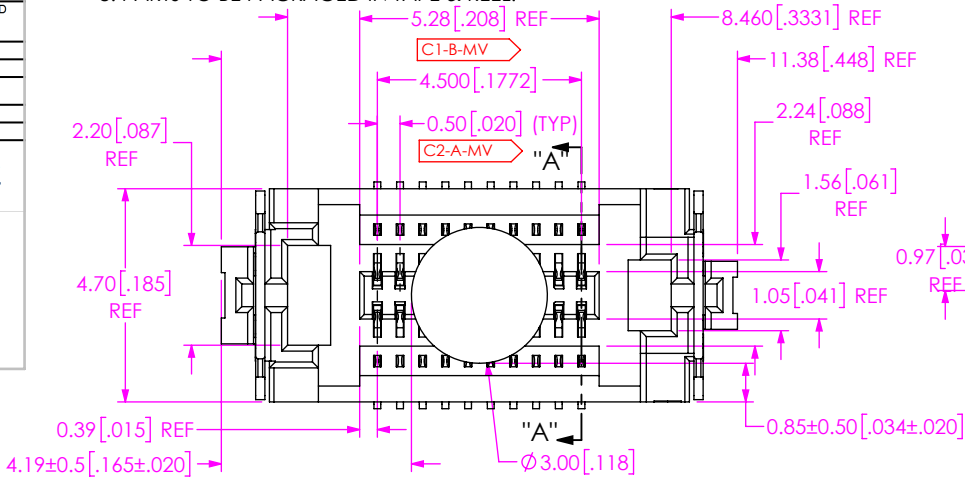
REVISION

0	DM	T WILD
5/18/2015 ECN-251167		
ISSUE FOR REVIEW.		
1	JB	T WILD
5/28/2015 ECN-251822		
NOTES: CHG NOTE 1 "...ASP." TO "...ASP. LIKE..."		
A	PD	T WILD
6/17/2015 ECN-252998		
RELEASE FOR PRODUCTION, ADD PACKAGING VIEW.		
B	MM	T WILD
8/3/2015 ECN-255961		
ADD SHEET2.		
C	JZ	T WILD
7/31/2016 ECN-281058		
SHT 2, RECOMMENDED PCB LAYOUT: CHG 9.50, 13.70, 15.21 & 16.38 TO 4.50, 8.70, 10.21 & 11.38, ADD LABELS 01 & 02.		

NOTES:

- STANDARD PART SET UP AS ASP. LIKE PART: SSH-010-1.50-G-D-A-K-TR
- CX-X REPRESENTS A CRITICAL DIMENSION.
- MINIMUM PUSHOUT FORCE: 1.60N[.36 LB].
- COPLANARITY MEASUREMENT INCLUDES WT'S WHERE APPLICABLE.
- CONTACT TIPS NOT TO PROTRUDE ABOVE PLASTIC.
- WT TO BE MEASURED FROM FIRST AND LAST CONTACT LEAD POSITIONS.
- USE MEASURING FIXTURE AT-2301-802.
- PARTS TO BE PACKAGED IN TAPE & REEL.

DESIGNED & DIMENSIONED
IN MILLIMETERS [INCHES]



BY SIGNING THIS DOCUMENT YOU ARE ACCEPTING THE CONDITIONS SET WITHIN. YOUR REQUIREMENTS MUST BE LISTED WITHIN THIS DRAWING. WHERE NO DIRECTION FROM THE CUSTOMER IS IDENTIFIED SAMTEC'S PROCESS REQUIREMENTS WILL BE USED.

DATE: _____
 COMPANY: _____
 CUSTOMER SIGNATURE: _____
 PRINTED NAME: _____
 PHONE No.: _____
 EXCEPTIONS: _____

UNLESS OTHERWISE SPECIFIED, DIMENSIONS ARE IN MILLIMETERS. TOLERANCES ARE:
 DECIMALS ANGLES
 .X: ±0.3[.01]
 .XX: ±0.13[.005]
 .XXX: ±0.051[.0020]

PROPRIETARY NOTE
 THIS DOCUMENT CONTAINS CONFIDENTIAL AND PROPRIETARY INFORMATION AND ALL DESIGN, MANUFACTURING, REPRODUCTION, USE, PATENT RIGHTS AND SALES RIGHTS ARE EXPRESSLY RESERVED BY SAMTEC, INC. THIS DOCUMENT SHALL NOT BE DISCLOSED, IN WHOLE OR PART, TO ANY UNAUTHORIZED PERSON OR ENTITY NOR REPRODUCED, TRANSFERRED OR INCORPORATED IN ANY OTHER PROJECT IN ANY MANNER WITHOUT THE EXPRESS WRITTEN CONSENT OF SAMTEC, INC.

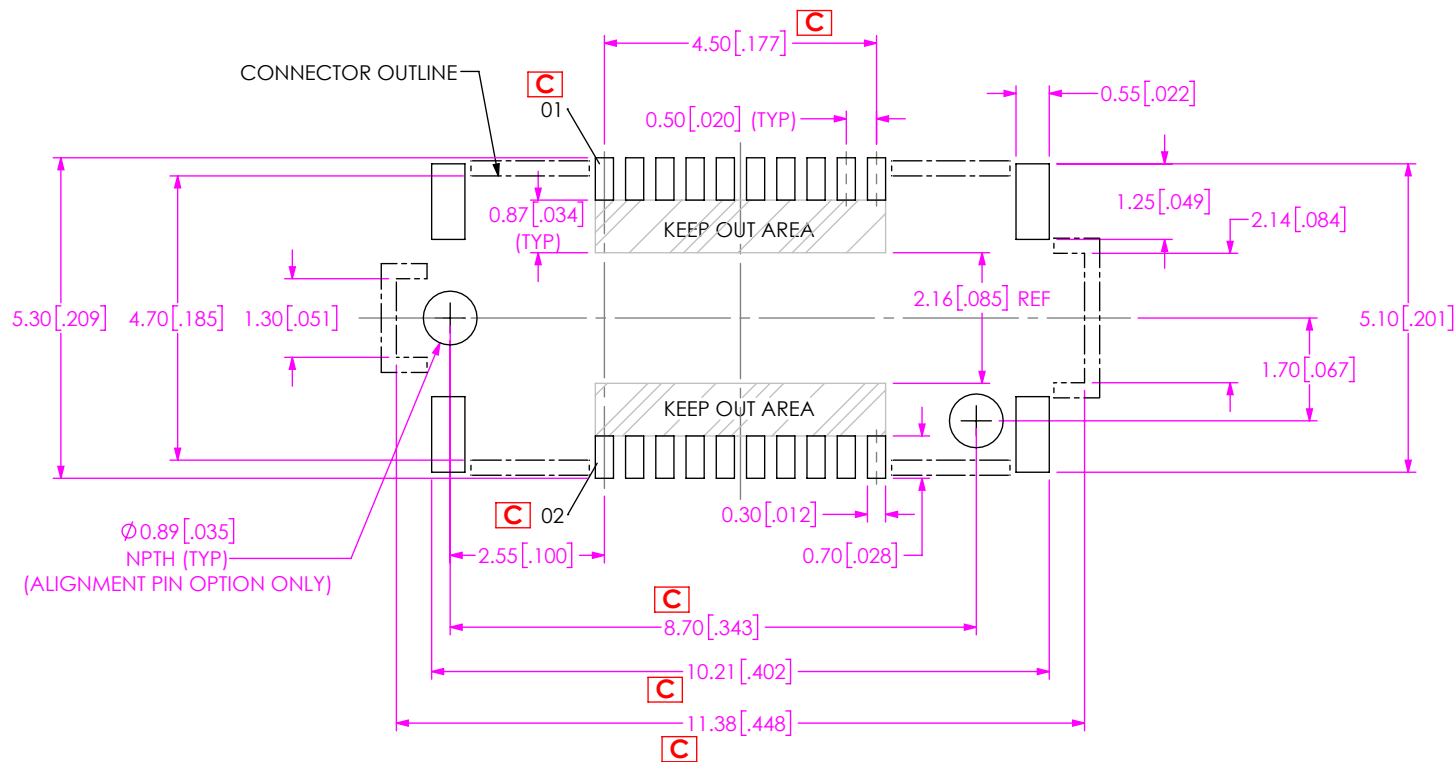


520 PARK EAST BLVD, NEW ALBANY, IN 47150
 PHONE: 812-944-6733 FAX: 812-948-5047
 e-Mail: info@SAMTEC.com code 53322

DO NOT SCALE DRAWING SHEET SCALE: 8:1
 PLATING:
 ITEM 2: CONTACT AREA: .000010" GOLD OVER .000050" NICKEL
 REMAINDER: .000001" GOLD OVER .000050" NICKEL
 ITEM 3: .000200" REF TIN OVER .000050" NICKEL
 F:\DWG\SW\ASP\187000\ASP-187091-01.SLDDRW

DESCRIPTION: SSH SOCKET ASSEMBLY
 DWG. NO. ASP-187091-01
 BY: D MOK 05/18/2015 SHEET 1 OF 2

ITEM NO.	PART NUMBER	QUANTITY	MATERIAL
1	SSH-010-1.50-D-A	1.0000	VECTRA E150i, COLOR: BLACK
2	C-354-1.50-G	20.000	BeCu, ALLOY 260, TM04
3	WT-76-01-T	2.0000	PHOS BRONZE, 510 SPRING TEMPER
4	K-DOT-.118-.219-.005	1.0000	POLYIMIDE FILM
5	CT-SSH002MS	.00045	CONDUCTIVE POLYMER



RECOMMENDED PCB LAYOUT

PROPRIETARY NOTE
 * THIS DOCUMENT CONTAINS CONFIDENTIAL AND PROPRIETARY INFORMATION AND ALL DESIGN, MANUFACTURING, REPRODUCTION, USE, PATENT RIGHTS AND SALES RIGHTS ARE EXPRESSLY RESERVED BY SAMTEC, INC. THIS DOCUMENT SHALL NOT BE DISCLOSED, IN WHOLE OR PART, TO ANY UNAUTHORIZED PERSON OR ENTITY NOR REPRODUCED, TRANSFERRED OR INCORPORATED IN ANY OTHER PROJECT IN ANY MANNER WITHOUT THE EXPRESS WRITTEN CONSENT OF SAMTEC, INC. *



520 PARK EAST BLVD, NEW ALBANY, IN 47150
 PHONE: 812-944-6733 FAX: 812-948-5047
 e-Mail info@SAMTEC.com code 55322

SHEET SCALE: 5:1

DESCRIPTION: SSH SOCKET ASSEMBLY

DWG. NO. ASP-187091-01

Mouser Electronics

Authorized Distributor

Click to View Pricing, Inventory, Delivery & Lifecycle Information:

[Samtec:](#)

[ASP-187091-01](#)