



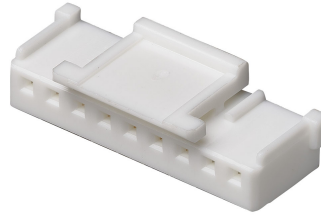
Part Number : [355070800](#)

Product Description : 2.00mm Pitch Sherlock Wire-to-Board Housing, Natural, 8 Circuits

Series Number : 35507

Status : New Business Not Supported

Product Category : Connector Housings



---

## Documents & Resources

---

## Product Environment Compliance

### Compliance

GADSL/IMDS	Not Relevant
China RoHS	
EU ELV	Not Relevant
Low-Halogen Status	Not Low-Halogen per IEC 61249-2-21
REACH SVHC	Not Contained per D(2024)6225-DC (07 Nov 2024)
EU RoHS	Compliant per EU 2015/863

### Multiple Part Product Compliance Statements

- Eu RoHS
- REACH SVHC
- Low-Halogen

### Multiple Part Industry Compliance Documents

- IPC 1752A Class C
- IPC 1752A Class D
- Molex Product Compliance Declaration
- IEC-62474
- chemSHERPA (xml)

### EU RoHS Certificate of Compliance

---

## Part Details

### General

Status	New Business Not Supported
--------	----------------------------

Category	Connector Housings
Series	35507
Description	2.00mm Pitch Sherlock Wire-to-Board Housing, Natural, 8 Circuits
Application	Signal, Wire-to-Board
Product Name	Sherlock
UPC	800753877658

#### Agency

CSA	LR19980
UL	E29179

#### Physical

Circuits Detail	8
Circuits (maximum)	8
Color - Resin	Natural
Flammability	94V-0
Gender	Receptacle
Glow-Wire Capable	No
Keying to Mating Part	None
Lock to Mating Part	Yes
Material - Resin	Polyester
Net Weight	0.380/g
Number of Rows	1
Packaging Type	Bag
Panel Mount	No
Pitch - Mating Interface	2.00mm
Polarized to Mating Part	Yes
Stackable	No
Temperature Range - Operating	-40° to +105°C

#### Solder Process Data

Lead-Free Process Capability	N/A
------------------------------	-----

---

---

This document was generated on Jan 05, 2025