

Oct.1.2024 Copyright 2024 HIROSE ELECTRIC CO., LTD. All Rights Reserved.
 In case of consideration for using Automotive equipment / device which demand high reliability, kindly contact our sales window correspondents.

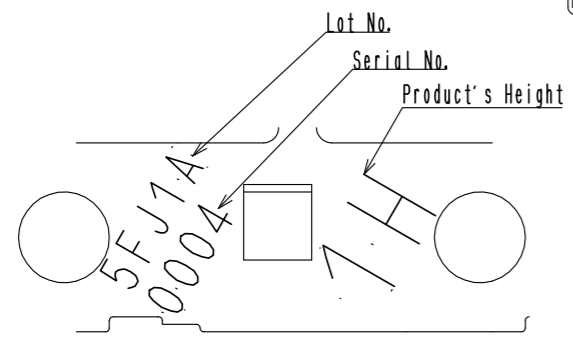
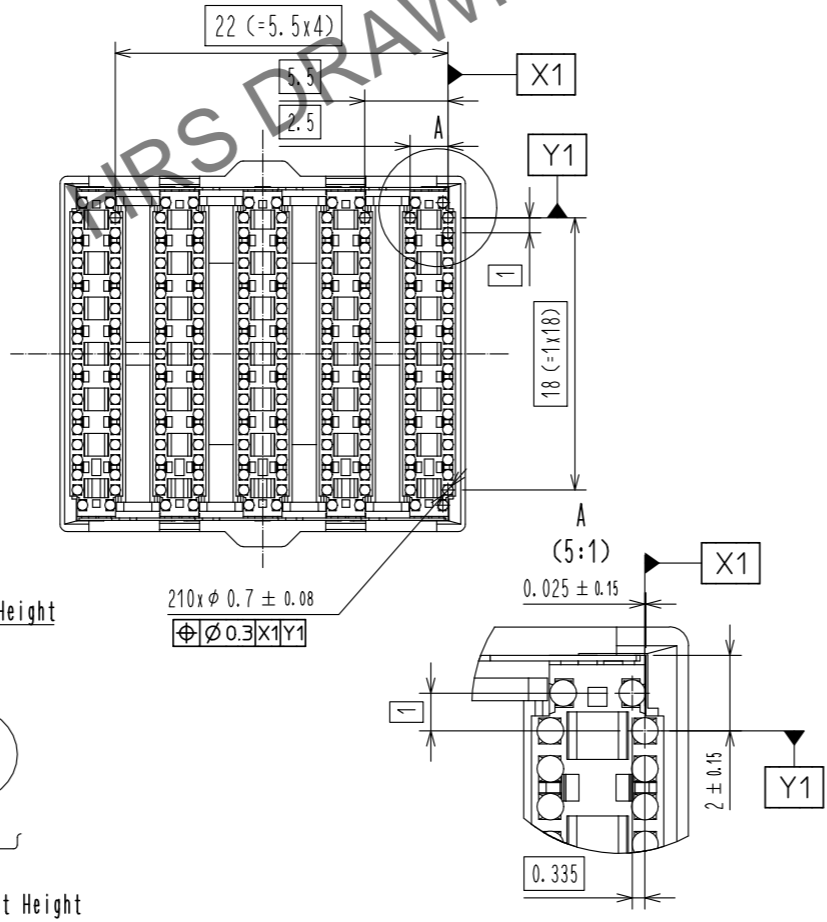
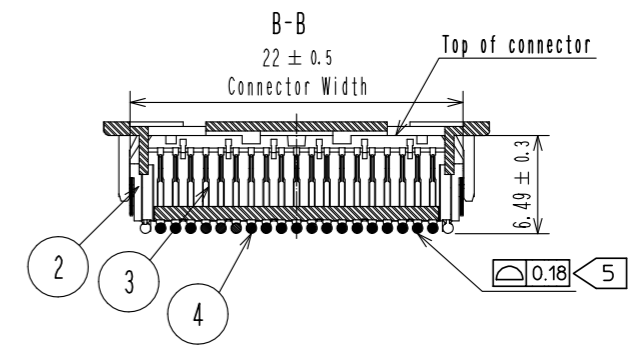
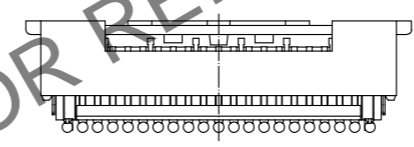
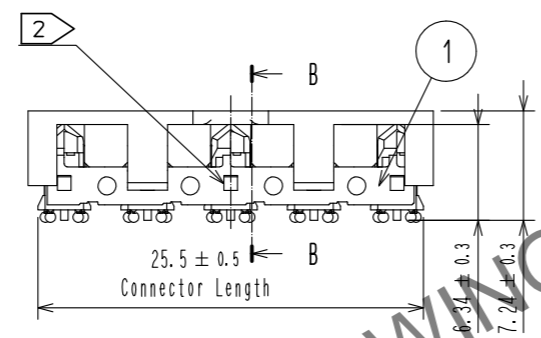
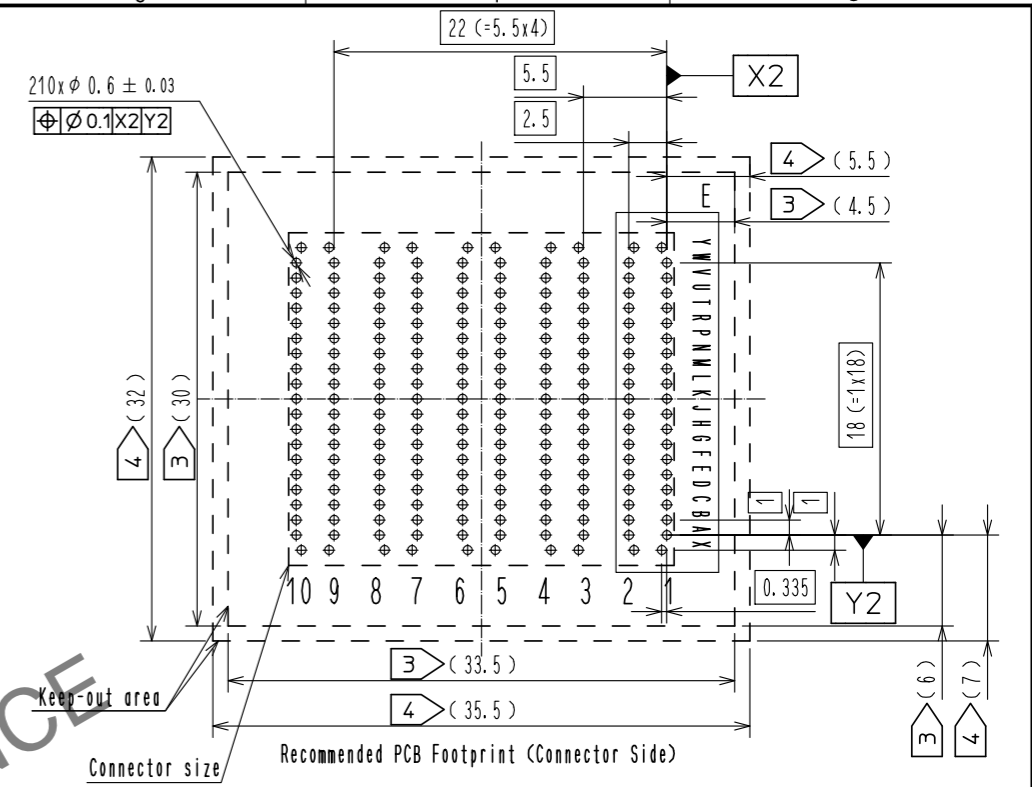
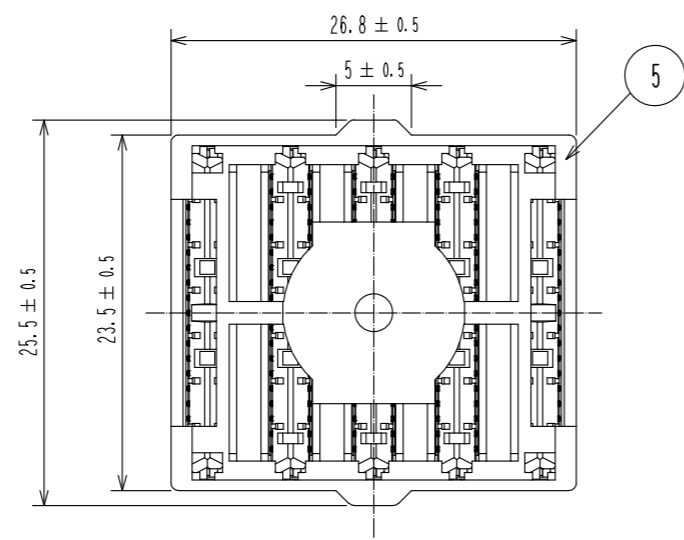
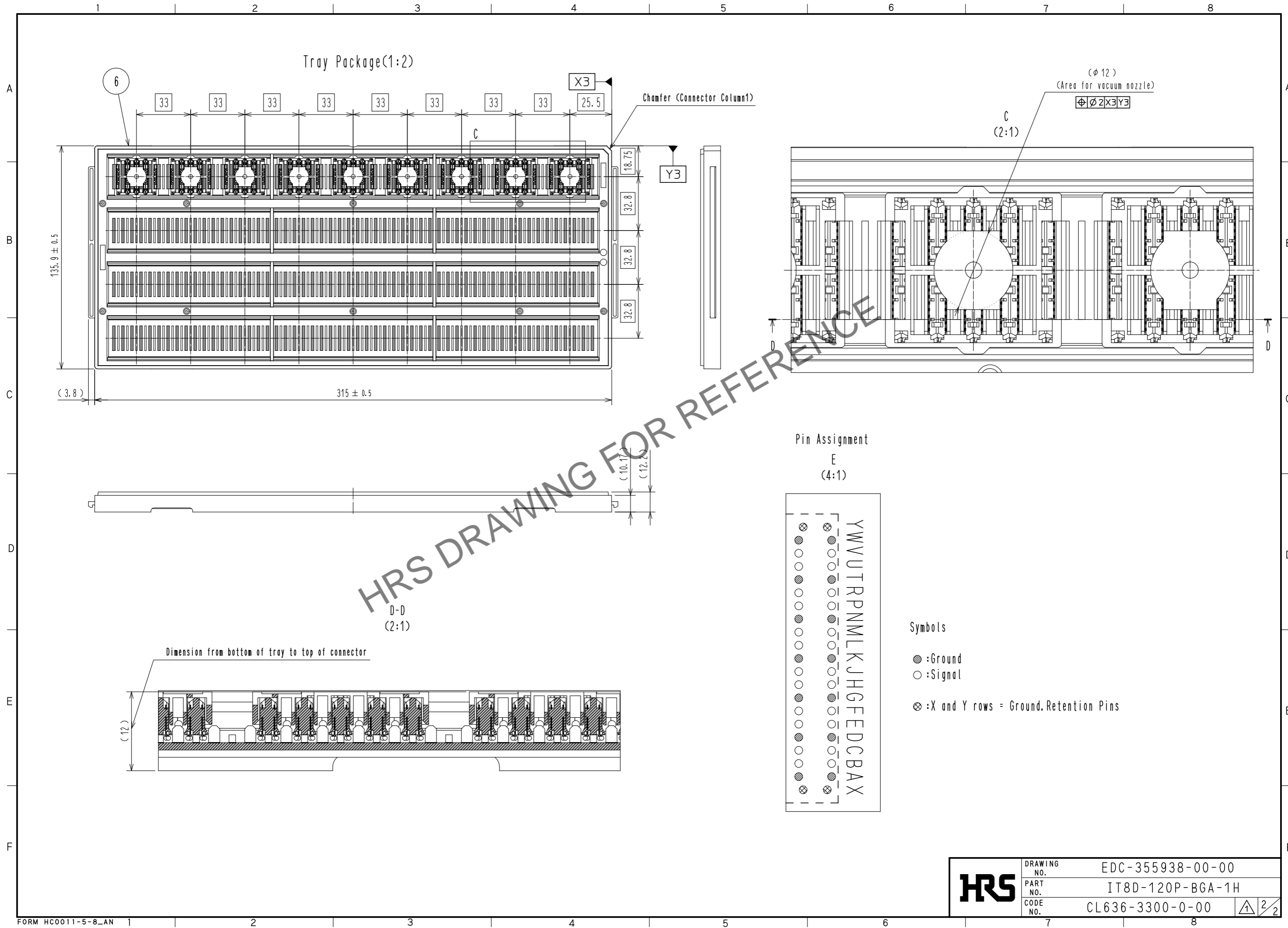


Figure 1 Example of Lot No., Serial No. and Product Height

- Note.
1. IT8 plug to be mated and unmated with IT8-S-**H(**) or IT8M-S-BGA-**H(**).
 2. Lot no. , serial no. and product's height is marked at the approx. location shown.
 3. Minimum clearance for all devices.
 4. Minimum clearance for sensitive devices.
 5. Maximum coplanarity of the ball field is 0.18mm.
 6. Please remove the pick up cap (part No.5) from the IT8 connector after reflow soldering.
 7. The removed pick up cap (part No.5) should not be reused.
 8. Standard package of 108pcs are packaged in a carton box.
 9. This product is recommended to be used within four weeks after unpacked due to the possibility of oxidation of BGA.
 10. This product is a solder ball locations and coplanarity sensitive BGA connector. It is recommended to handle this product with the automated machine. Solder ball locations and coplanarity might be damaged accidentally when it is manually handled by assembly workers.

| | | | | | | | |
|--------------------------------------|--------------|--|------------------------------|--|---------------------------|----------------------|------------------|
| 3 | Copper alloy | Contact area:Nickel 1.27μm min.+Gold 0.76μm min. | 6 | HIPS | TRAY, GRAY | | |
| 2 | LCP | Other area:Nickel 1.27μm min. | 5 | PA-M | BLACK, UL94V-0 | | |
| 1 | Copper alloy | Nickel 1.27μm min. | 4 | TIN | Sn(96.5)-Ag(3)-Cu(0.5) | | |
| NO. | MATERIAL | FINISH . REMARKS | NO. | MATERIAL | FINISH . REMARKS | | |
| UNITS mm | | SCALE 2 : 1 | COUNT 1 | DESCRIPTION OF REVISIONS DIS-F-00004045 | DESIGNED AS. MATSUZAWA | CHECKED MK. EZAKI | DATE 20181228 |
| HRS HIROSE ELECTRIC CO., LTD. | | APPROVED :MK. EZAKI 20160304 | DRAWING NO. EDC-355938-00-00 | | | | |
| | | CHECED :YS. TAKEUCHI 20160304 | PART NO. IT8D-120P-BGA-1H | | | | |
| | | DESIGNED :NH. TAMAI 20160304 | CODE NO. CL636-3300-0-00 | | | | |
| | | DRAWN :NH. TAMAI 20160304 | | | | | |

Oct. 1. 2024 Copyright 2024 HIROSE ELECTRIC CO., LTD. All Rights Reserved.
 In case of consideration for using Automotive equipment / device which demand high reliability, kindly contact our sales window correspondents.



| | | |
|------------|-------------|------------------|
| HRS | DRAWING NO. | EDC-355938-00-00 |
| | PART NO. | IT8D-120P-BGA-1H |
| | CODE NO. | CL636-3300-0-00 |
| | | 2/2 |

Mouser Electronics

Authorized Distributor

Click to View Pricing, Inventory, Delivery & Lifecycle Information:

[Hirose Electric:](#)

[IT8D-120P-BGA-1H](#)