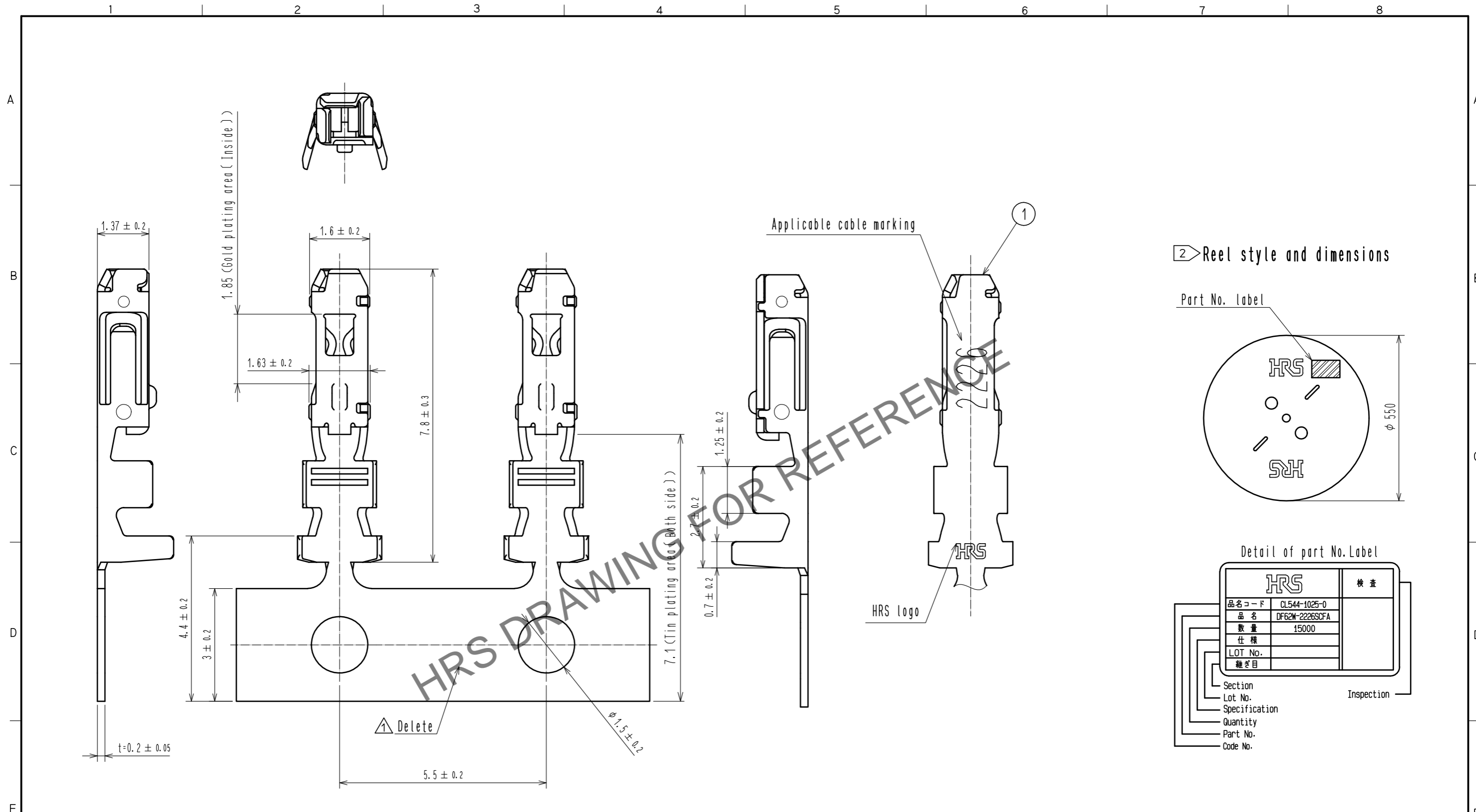
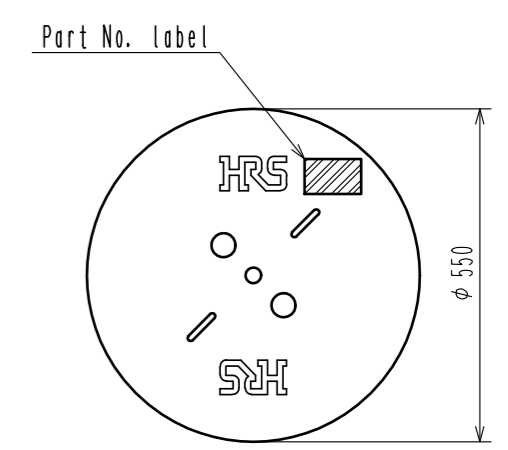


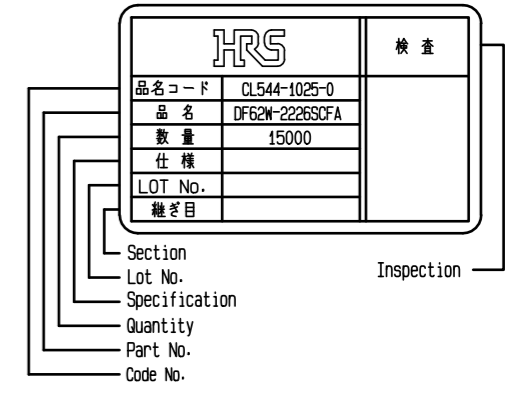
Nov.1.2024 Copyright 2024 HIROSE ELECTRIC CO., LTD. All Rights Reserved.  
 In case of consideration for using Automotive equipment / device which demand high reliability, kindly contact our sales window correspondents.



2 Reel style and dimensions



Detail of part No. Label



Notes

- 1RL : 15000 contacts.
- 2 Style of reel and box are shown in figure.
- Up to 5 reels are packed up in one box.
- Please be sure to check the form of crimping using a cable when you adjust applicator.
- Always refer to the manuals below for operation of this product.  
 For Cable assembly / Cable assembly procedure ETAD-H0760  
 For Mating/Unmating / Operation manual ETAD-H0761

NO.	MATERIAL	FINISH . REMARKS	NO.	MATERIAL	FINISH . REMARKS		
1	Phosphor bronze	Contact area:Gold plating 0.2μm min Carrier/Barrel area:Tin plating 1μm min Others : Nickel plating 0.5 μm min					
UNITS mm		SCALE 10: 1	COUNT 1	DESCRIPTION OF REVISIONS DIS-H-00001435	DESIGNED YK. YAMAGUCHI	CHECKED TS. FUKUSHIMA	DATE 16. 03. 04
	HIROSE ELECTRIC CO., LTD.	APPROVED : KI. AKIYAMA 15. 12. 14	CHECKED : TS. FUKUSHIMA 15. 12. 14	DESIGNED : YK. YAMAGUCHI 15. 12. 11	DRAWN : MI. SAKIMURA 15. 12. 11	DRAWING NO. EDC-364715-00-00	PART NO. DF62W-2226SCFA
						CODE NO. CL544-1025-0-00	

# Mouser Electronics

Authorized Distributor

Click to View Pricing, Inventory, Delivery & Lifecycle Information:

[Hirose Electric:](#)

[DF62W-2226SCFA](#)